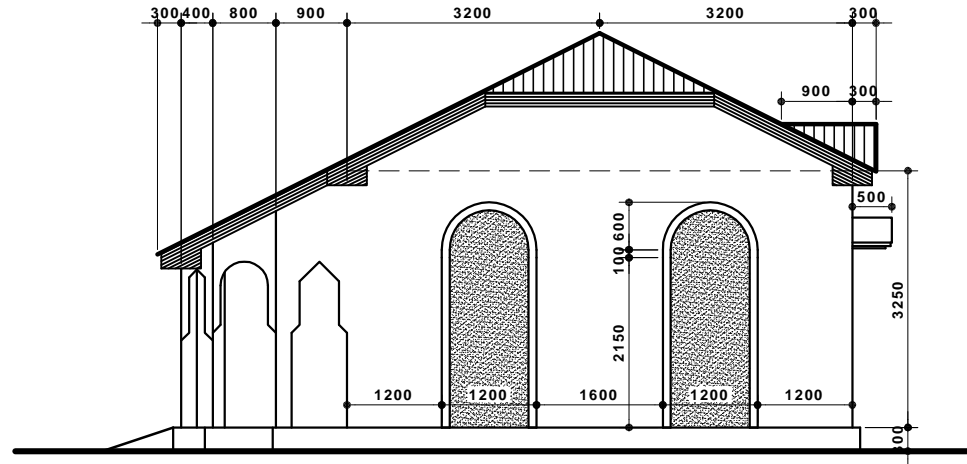
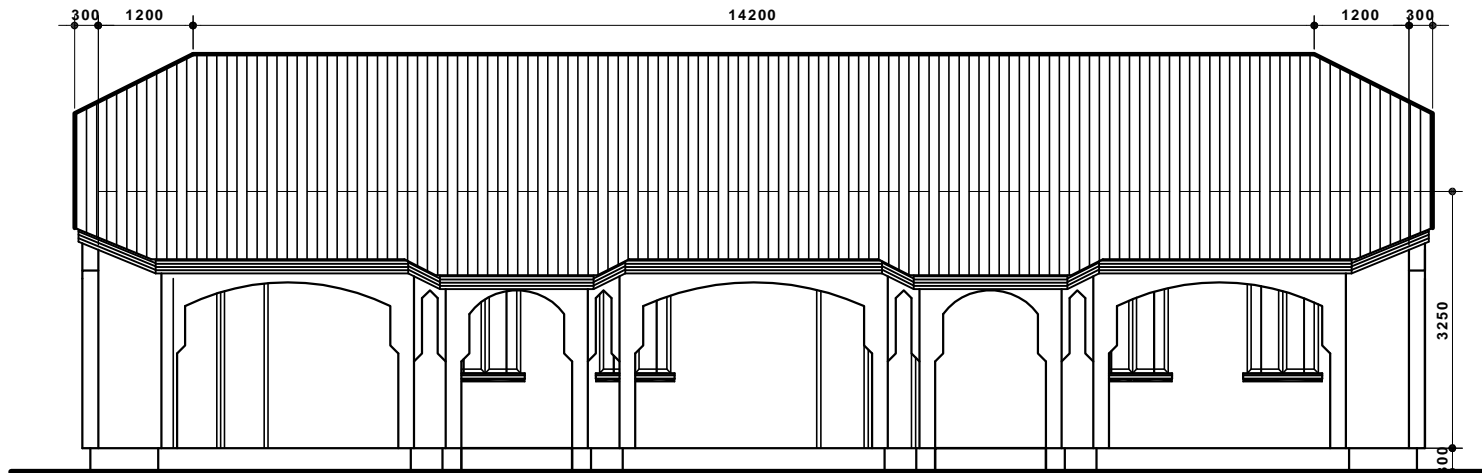


TWO CLASSROOMS SCHOOL BLOCK



RIGHT SIDE ELEVATION / SCALE= 1:100



FRONT SIDE ELEVATION
SCALE= 1:100



1	PROJECT	DESIGN OF A 2 CLASSROOMS SCHOOL BLOCK
2	LOCATION	BURTINLE TOWN / NUGAL / PUNTLAND
3	FUNDED BY	SCI / GAROWE OFFICE / PUNTLAND SOMALIA
4	OWNER	AL-CULUM PRIMARY SCHOOL / BURTINLE TOW
5	DRAWING	FRONT & RIGHT SIDES ELEVATIONS / 1:100
6	DESIGNED BY	ENGINEER A/AZIZ OSMAN KITEH
7	DRAWN BY	IDEM / TEL. 0907740100
8	DATE	MARCH 24 / 2020

2 CLASSROOM SCHOOL BLOCK
AL-CULUM PRIMARY SCHOOL
BURTINLE TOWN / NUGAL / PUNTLAND